

## Burning CDs with the Iomega HotBurn Software in Windows XP.

1. Establish what needs to be burned and then run the Iomega HotBurn software. There are two ways to run the program. First, double-click the Iomega HotBurn



software icon on the desktop or click, Start, Programs, Iomega HotBurn, Iomega HotBurn. The opening screen should look like Figure 1.



Figure 1. Opening Screen.

2. There are three major options for burning CDs; Music CD, Data CD, and CD Copy. Music CD and CD Copy will not be covered by this document, but rather we will focus on the Data CD option. Click the Data CD button as shown in Figure 2.

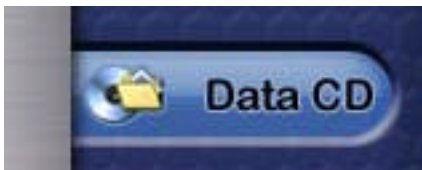


Figure 2. Data CD Button (partial screen).

3. After clicking on the Data CD button, you may encounter another window called QuickStart Data CD. This describes in two parts how to continue with your CD burning along with Tips prior to burning. This is shown in Figure 3.

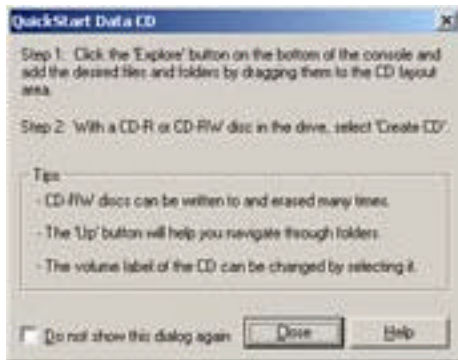


Figure 3. QuickStart Data CD window.

To continue click 'Close'. Notice that this screen has an option to 'Do not show this dialog again' and that is why you may not see this screen.

4. We are now ready to create our CD layout. Figure 4 shows the default CD Volume name based on the current date, and your date will be different.

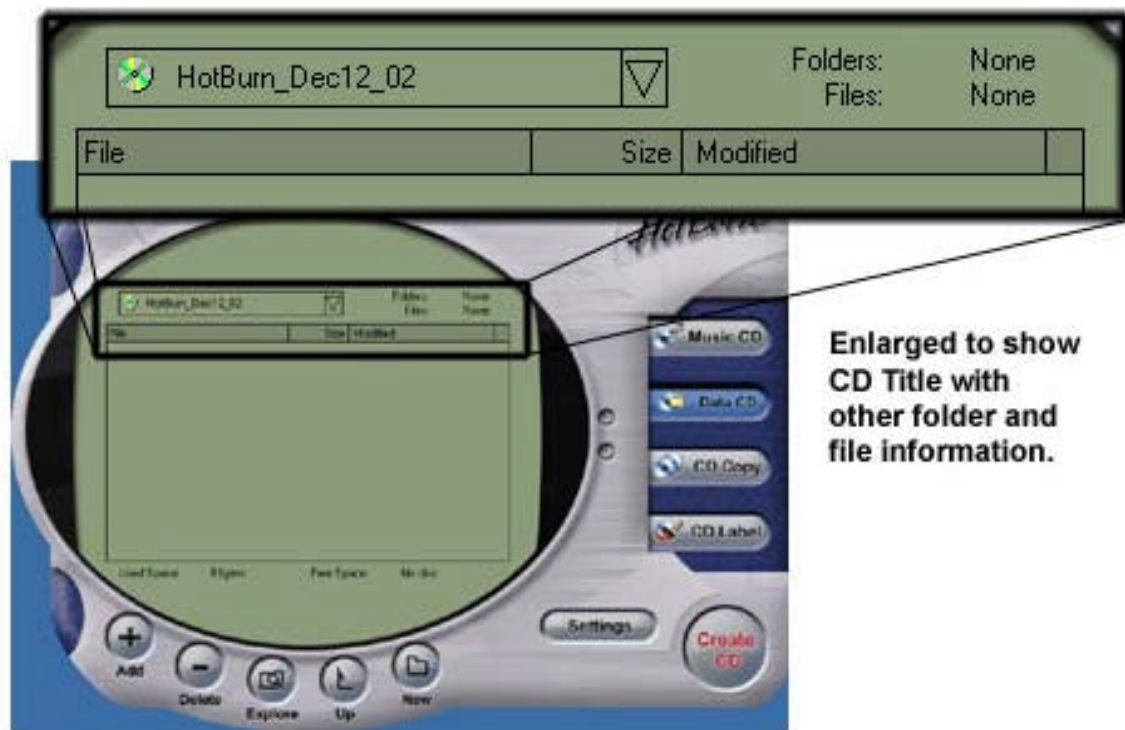


Figure 4. CD Volume name enlargement.

I normally start by renaming the Volume name to something more descriptive. I do usually keep the date in the name to provide a later reference to when I initially started this CD. To change the volume name, click in the box and erase the default name. Continue by typing in the Volume name of your choice. Hit 'Enter' to continue.

- Five large buttons that are located near the bottom of the application have different functions. These buttons, shown in Figure 6, are the 'Add', 'Delete', 'Explore', 'Up', 'New', and 'Settings'.



Figure 5. Bottom panel buttons (partial screen).

Click 'Add' to add files or folders to the CD layout. 'Delete' will remove any files or folders that you have highlighted in the CD layout. 'Explore' opens a Windows Explorer screen. 'Up' takes you up a level in the directory structure of your CD layout. 'New' will create a new folder which you can rename and add files or folders into it. 'Settings' can be clicked anytime before burning to double-check burning options.

To add files and folders to the CD layout, you have several options. You can drag a folder from another open window, Right click in the layout area and choose (your only option at this time) 'Add Files and Folders...', or click the Add button or the '+' sign button.

Clicking the 'Settings' button opens the screen shown in Figure 7.

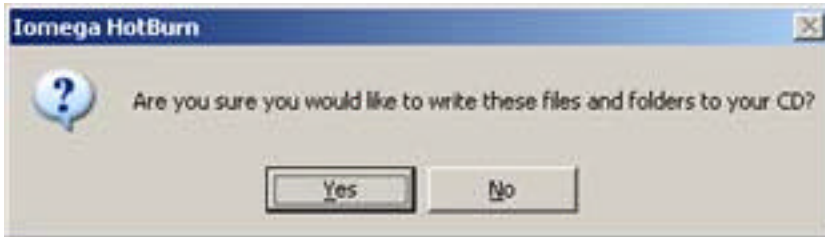


Figure 6. Settings Window.

You should not have to change any settings on this window. It should recognize your CD burner and if it doesn't, you have an option to select it. Also, this feature may be available to users with more than one burner. I would keep Burn speed to the maximum unless you have problems. If you need to make more than one copy of your information and have the blank CDs ready, click and change the number of Copies. Click on 'Simulate First?' to simulate or test the CD actually burning. If you choose this option,

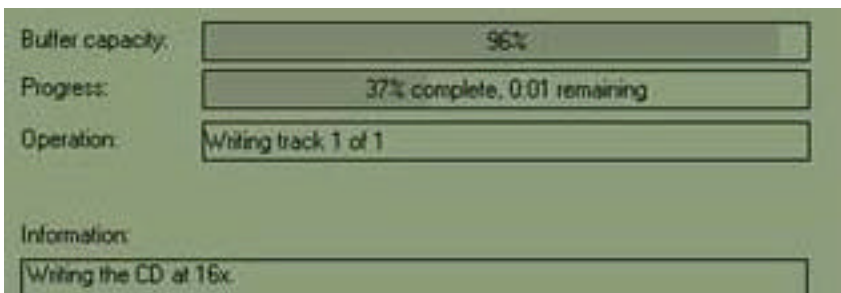
your CD will not burn but will be simulated! You could use this feature only if you do not trust your burner and you only have one blank CD to work with. Again, in general, you should not have to change any of these options to get a successful burn.

6. Now that you have changed the Volume name, added your files and folders, you are ready to burn. After inserting a blank CD into the Iomega CD-RW drive, click the large Create CD button in the lower right part of the screen. You are given one more chance to change your mind when another window opens. This is shown in Figure 7. Click 'Yes' to continue.



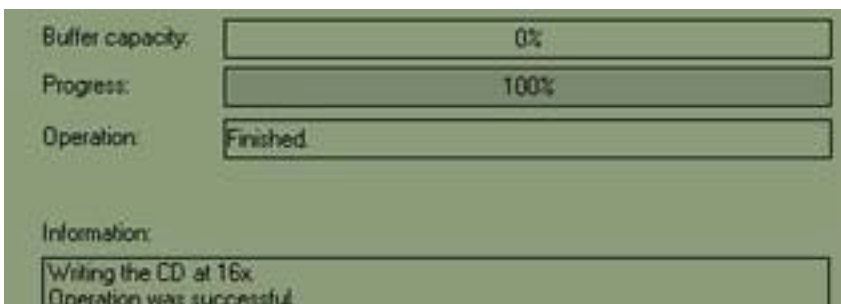
**Figure 7. Are you sure?**

The CD layout will change and two or three tests will be performed. Figure 8 shows the CD burning in progress.



**Figure 8. CD Burning in Progress (partial screen).**

Figure 9 shows a successful completed CD creation.



**Figure 9. Successful CD creation (partial screen).**

Congratulations on your successful burn!

[\\Aidtech\K\Admin\\_Docs\tutorials\Burning](http://Aidtech/K/Admin_Docs/tutorials/Burning) CDs with the Iomega HotBurn Software in Windows XP.doc