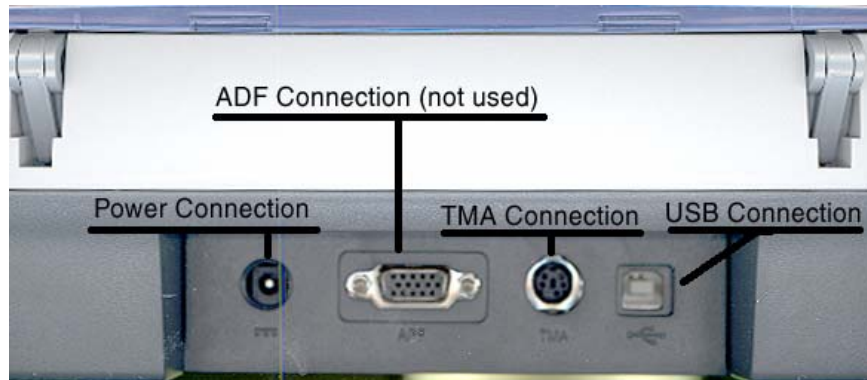


## Negative/Slide Scanning with the HP 4570c

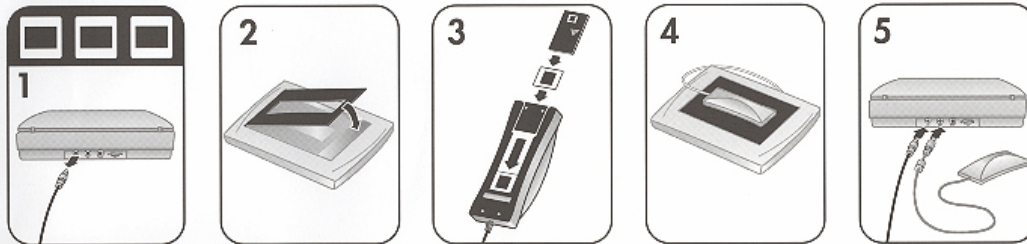
### Step 1. Attaching the Transparency Adapter.

Check out the slide/negative adapter from the Print Lab. Disconnect the power from the back of the scanner. You may want to remove the lid while performing this operation. To remove live open lid to it's farthest open position and pull up and off. Place the lid to the side. Place the large transparency adapter guide on the bed of the scanner. Place the light unit into the rectangular opening. Be sure to connect the communication cable coming from the light unit to the **TMA** connection on the back of the scanner. Now reconnect the power cable. See **Fig. 1** for a photo of the back of the HP 4570c for reference.



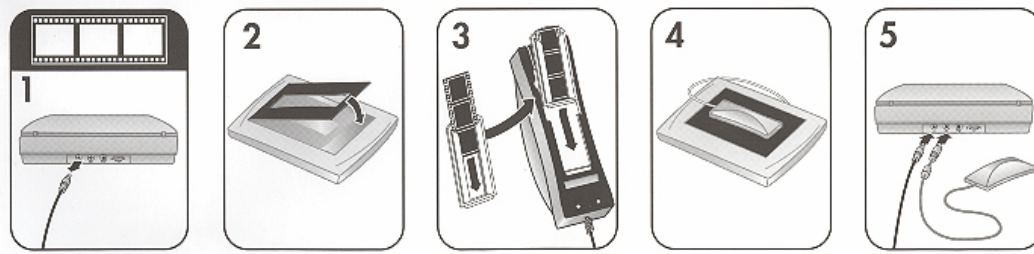
**Figure 1. Back of HP 4570c**

**Fig. 2** shows a portion of the handout that comes with the TMA adapter showing how to scan slides.



**Figure 2. Scanning slides.**

**Fig. 3** shows the other portion of the handout relating to scanning negatives.



**Figure 3. Scanning negatives.**

**Step 2. Negatives or slides.**

Choose the appropriate option: Slides or Negatives. Insert the negative or slide(s) into the appropriate holder shown in either **Fig. 2** or **Fig. 3**. Place the TMA back onto the scanner.

**Step 3. Running the software.**

Click on the **HP Director** icon shown in **Fig. 5**. This will open the HP Director software.



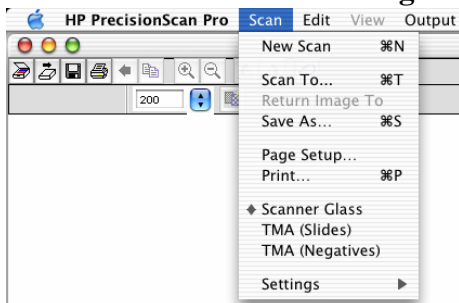
**Figure 5. HP Director Icon**

You should now see the HP Director running. It should look like Fig. 6.



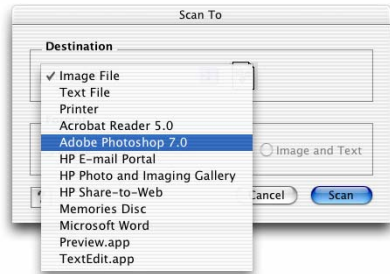
**Figure 6. HP Photo and Imaging Director.**

The scanner will automatically enable certain buttons in the Precision Scan software once this is connected. Notice in **Fig. 4** that the TMA options are now active.



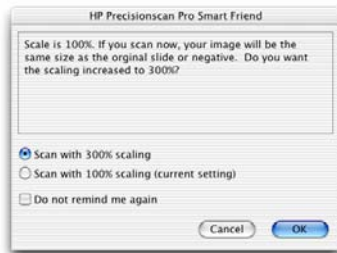
**Figure 4. TMA options are active.**

Click the Preview Scan button to scan the length of the bed. Once you have done this select the photo that you would like to scan. Click the Scan To button to bring up the window shown in **Fig. 5**.



**Figure 5. Scan To options.**

I chose Adobe Photoshop 7.0 in this example. Once selected, click on Scan. If you did not change the resolution, you may get the following prompt.



**Figure 6. HP PrecisionScan Pro Smart Friend.**

I usually stick with the defaults here. If you are not happy with the scaling once you have the image in Photoshop. Repeat the process and scale the photo more or less than 300%. This should rescan and open Photoshop and display your scan. You are now free to edit the photo in Photoshop.

Author: Michael Keller  
Platform: MAC  
Date: Tuesday, August 1, 2003