

Using the Plot Utility 2003

Step 1. Running the Program.

If the program does not start-up on login, open the 'Plot Utility' folder located on the C: drive and run the **Plot2003.exe** program. The program should look similar to the image in Figure 1.

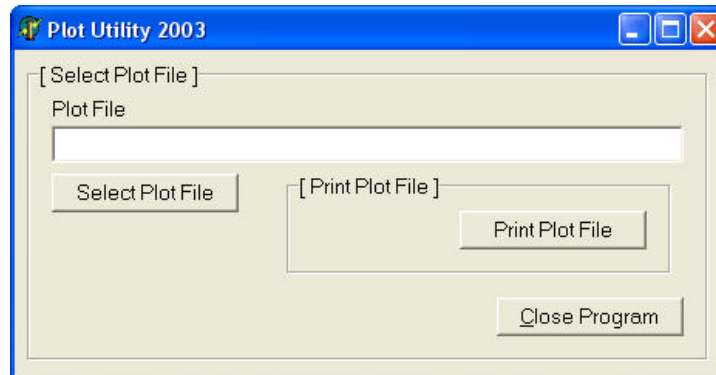


Figure 1. Plot Utility 2003

Step 2. Locate the plot file.

Click the 'Select Plot File'. A File Open dialog similar to the one shown in Figure 2 shows.

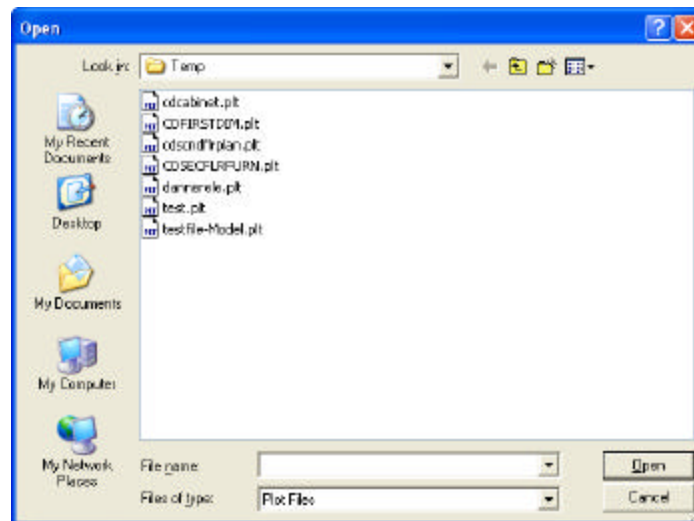


Figure 2. Locating the plot file with File Open dialog.

You should be able to browse the server for the local machine or a PC located on the network. Select the plot file and then click Open. This should return the filename into the plot file text box. Continue to Step 3.

Step 3. Print the plot file.

After loading and aligning your sheet into the plotter, click the 'Print Plot File' button. If your plot was successfully copied to the plotter, you should receive the following window as shown in Figure 3.

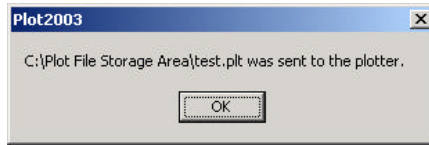


Figure 3. Successful plot message.

Author: Michael Keller

Platform: PC

Date: Tuesday, July 29, 2003